

**Nabhi Christian Ministries**  
**Profit & Loss**  
 January through December 2023

---

	Jan - Dec 23
<b>Ordinary Income/Expense</b>	
<b>Income</b>	
Contributions and Offerings	26,942.00
Corporate Grants	3,259.00
In-Kind Donations	460.00
Membership Dues	750.00
Reimbursements	27.00
Short Loans	900.00
Special Events	
Annual Gala Revenue	4,050.00
<b>Total Special Events</b>	4,050.00
<b>Total Income</b>	36,388.00
<b>Gross Profit</b>	36,388.00
<b>Expense</b>	
<b>Administration</b>	
Bank Fees	55.00
Building Maintenance	
grounds/Landscape	1,480.00
Janitorial Services	325.00
Repair and Maintenance	2,429.00
<b>Total Building Maintenance</b>	4,234.00
Office Expense	745.00
Professional Fees	198.00
Property/Liability Insurance	2,862.00
Staff Development	412.00
Subscriptions/Memberships	163.00
Travel	100.00
Utilities	6,324.00
<b>Total Administration</b>	15,093.00
<b>Hands 4 Hope Outreach &amp; Mission</b>	
Hardship Program	11,298.00
In-Kind Clearing	-460.00
Travel Expense	532.00
Utilities	6,673.00
<b>Total Hands 4 Hope Outreach &amp; Mission</b>	18,043.00
<b>Total Expense</b>	33,136.00
<b>Net Ordinary Income</b>	3,252.00
<b>Net Income</b>	3,252.00

**Nabhi Christian Ministries**  
**Balance Sheet**  
As of December 31, 2023

---

	Dec 31, 23
<b>ASSETS</b>	
<b>Current Assets</b>	
<b>Checking/Savings</b>	
Citizens Business Checking	10,963.00
In-Kind Transfer Account	110.00
PNC Bank	-1,000.00
<b>Total Checking/Savings</b>	10,073.00
<b>Total Current Assets</b>	10,073.00
<b>Fixed Assets</b>	
Buildings - Operating	489,200.00
<b>Total Fixed Assets</b>	489,200.00
<b>TOTAL ASSETS</b>	<b>499,273.00</b>
<b>LIABILITIES &amp; EQUITY</b>	
<b>Liabilities</b>	
<b>Current Liabilities</b>	
Accounts Payable	
Grants Payable	-2,669.00
<b>Total Accounts Payable</b>	-2,669.00
<b>Other Current Liabilities</b>	
Citizens Bank Loan Transfers	1,298.00
<b>Total Other Current Liabilities</b>	1,298.00
<b>Total Current Liabilities</b>	-1,371.00
<b>Total Liabilities</b>	-1,371.00
<b>Equity</b>	
Opening Balance Equity	489,200.00
Unrestricted Net Assets	8,192.00
Net Income	3,252.00
<b>Total Equity</b>	500,644.00
<b>TOTAL LIABILITIES &amp; EQUITY</b>	<b>499,273.00</b>

**Nabhi Christian Ministries**  
**Statement of Cash Flows**  
January through December 2023

---

	<u>Jan - Dec 23</u>
<b>OPERATING ACTIVITIES</b>	
Net Income	3,252.00
Adjustments to reconcile Net Income to net cash provided by operations:	
Grants Payable	-107.00
Citizens Bank Loan Transfers	1,298.00
	<hr/>
Net cash provided by Operating Activities	4,443.00
	<hr/>
Net cash increase for period	4,443.00
	<hr/>
Cash at beginning of period	5,630.00
	<hr/>
Cash at end of period	<b><u><u>10,073.00</u></u></b>

**Nabhi Christian Ministries**  
**Statement of Functional Expenses (990)**  
January through December 2023

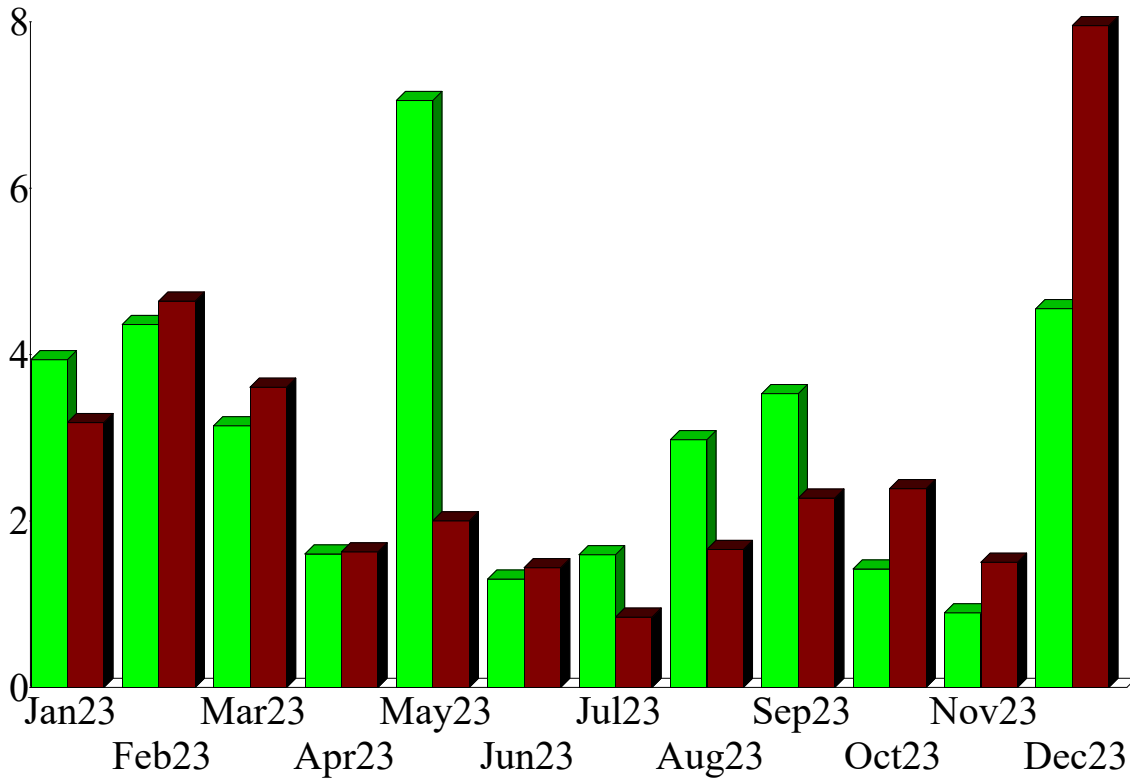
---

	<u>Jan - Dec 23</u>
Unrestricted Net Assets	282,986.00
Administration	15,093.00
Hands 4 Hope Outreach & Mission	<u>18,043.00</u>
<b>TOTAL</b>	<b><u><u>316,122.00</u></u></b>

## Income and Expense by Month January through December 2023

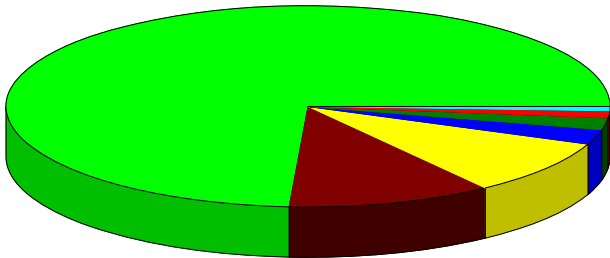


\$ in 1,000's



### Income Summary January through December 2023

Contributions and Offerings	74.04%
Special Events	11.13
Corporate Grants	8.96
Short Loans	2.47
Membership Dues	2.06
In-Kind Donations	1.26
Reimbursements	0.07
<b>Total</b>	<b>\$36,388.00</b>

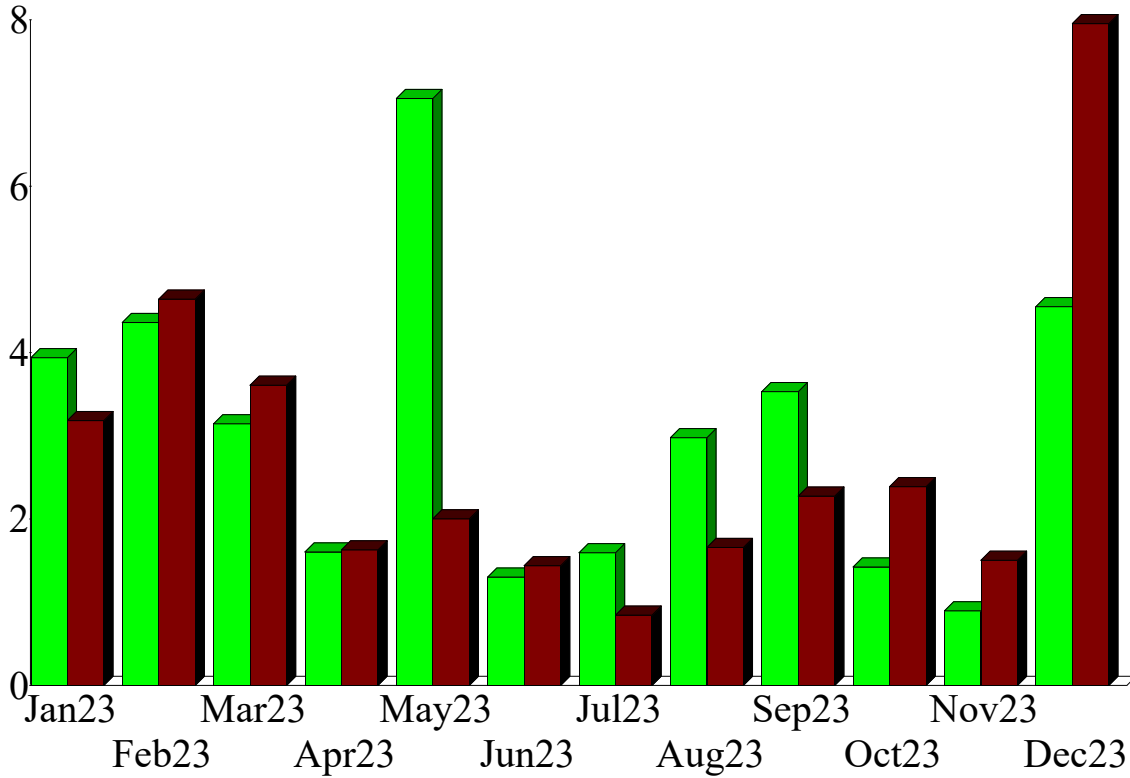


By Account

## Income and Expense by Month January through December 2023

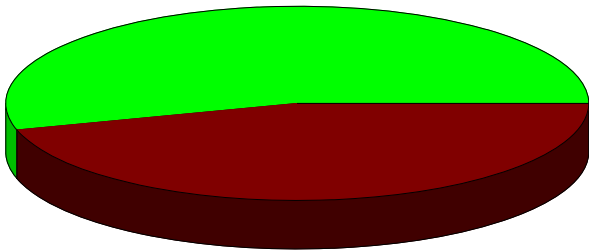


\$ in 1,000's



### Expense Summary January through December 2023

<span style="color: green;">■</span> Hands 4 Hope Outreach & Mis	54.45%
<span style="color: darkred;">■</span> Administration	45.55
<b>Total</b>	<b>\$33,136.00</b>



By Account